

Slim Porcelain



EP Laminatic porcelain panel is available in the following scope:

1. Sheet is to lose weight for the ceramic tile

The largest feature of laminatic porcelain panelX is thinness

The laminatic porcelain panelX is the platelike ceramic products made of clay or kaoline and other inorganic nonmetallic materials through the productive technology of shaping and hard fire, etc. The largest feature is thinness for that the thickness of common glazed brick is 10.6mm, however that of sheet is only 4.8–5.5mm which is half of the thickness.



2. Halved Thickness, reduplicate environmental protection and ideal decoration

The ceramics belongs to “three high” industry which means the high energy consuming, high pollution and high emission, however, sheet is low energy consuming, high technology and green and environment–friendly construction material which can save 60% raw material, reduce 50% energy consuming and lower 84% carbon emission which make us contribute to the environment when we sell one piece of EP sheet for the advantages of maximum environment–friendly influence, halved thickness and reduplicate environmental protection, what’s more, the tile face decoration aesthetic effect is not a little inferior to high–end ceramic tile.

3. Laminatic porcelain panelx is the future development tendency of ceramic tile

Laminatic porcelain panelX is the new decoration with high profit returns

As the new safe, durable, environmental–friendly, low–carbon and high–tech building materials, the laminatic porcelain panelX not only can conform to the domestic and overseas requirements of the overall situation, but also can rewrite the industry structure to get the high–profit returns by considering lightening construction quality, accelerating construction speed, reducing construction pollution, improving design works and lowering integrated cost, etc.

5 Exclusive Features of EP laminatic porcelain panelx

1. High-grade Technology and Fashion Decoration

New Zhongyuan Ceramics EP laminatic porcelain panelX owns the exclusive high–tech EP–STT ceramic tile body enhancement technology so it is the high–tech laminatic porcelain panelX ceramic tile.

2. Ultrathin Thickness and Light Construction

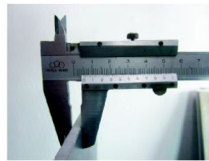
As the symbol of high technology, the thickness of New Zhongyuan Ceramics EP laminatic porcelain panelX is only 4.7–5.5mm which is 1/2 of common ceramic tile and the weight is only 9.0Kg, however, that of common ceramic tile is 22.5Kg. The thinner and the lighter of the New Zhongyuan Ceramics EP laminatic porcelain panelX is and the safer it will be. Light construction and carrying. The installation procedure reduces. The construction is simple and safe and cutting and drilling are easy. When you do the second decoration, there is no need to smash the wall, strike the brick and dismantle the tile and just to pave it on the original tile, which will not occupy much space and will enlarge the openness. It is a time–saving, labor–saving and worry–saving work.



Common Glazed Brick
Thickness 10.6mm
(600 × 1200mm)



Common Glazed Brick
Weight 22.5Kg
(600 × 1200mm)



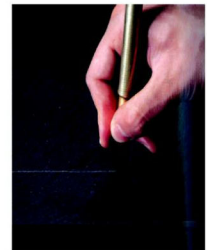
New Zhongyuan Ceramics EP Laminatic
porcelain panelx Thickness 4.7–5.5mm
600 × 1200mm)



New Zhongyuan Ceramics
EP Sheet Weight 9.0Kg
(600 × 1200mm)

For the thickness is thin, even you want to cut it, then can use glass cutter cut it into various kinds of measurements at will with easy construction and paving and the advantages brought are as follows:

- Clean: clean site operation and no dusts all over the sky.
- Fast: There is no need to smash the wall and dismantle it and you shall pave it on the original brick with minimum time. To the commercial space, it can make you earn money fast and to the living space, it can make you live in fast.
- Convenient: There is no need to move or rent another place. It is very convenient.
- Save: The wall smashing, brick striking, dismantling, rubbish transportation all are large pay expenses. Now the problem disappears. Minimum cost and refreshing money saving.



3. Moderate Specification and Wide Application

The area of each New Zhongyuan Ceramics EP sheet is length 0.6m × width 1.2m=0.72m². It works well. It is applicable in various spaces and home furnishing engineering. There is no need to cut during the paving on the wall or the floor.

4. Excellent Performance and Tough and Tensile Feature

It uses the high–grade technological EP–STT body enhancement technology which is different from the common ceramic tile with only superficial making up, however, it enhances the body at bottom through using new environmental–friendly body raw materials with high density and firing it with high temperature of 1200°C to reach 7 degree Mohs' scale of hardness then it is tough, tensile and pressure compressive. The bending degree and abrasion resistance of it exceed that of the common ceramic tile.

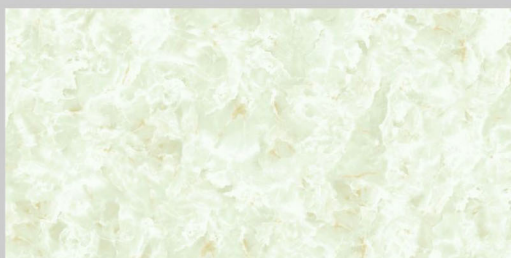
5. Low Carbon and Environmental Protection, Conform to the World Trend

Scientific and low–carbon production and over 50% reducing to the pollution emission, energy waste and raw material consumption as well as the reduplicate environmental protection to common ceramic tile make the decoration synchronize the world health environmental protection trend.

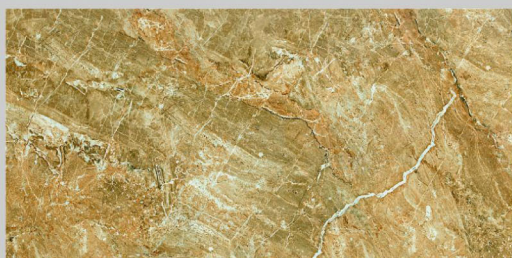


STONE COLOR LUXURY

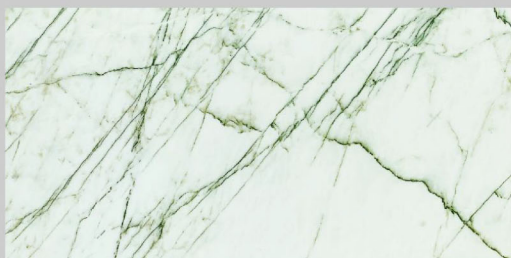
Stone Elegance and Talent Series



1-QGBY12602 (Glossy) Size: 600x1200mm
1-CGBY12602 (Matt)



1-QGBY12603 (Glossy) Size: 600x1200mm
1-CGBY12603 (Matt)



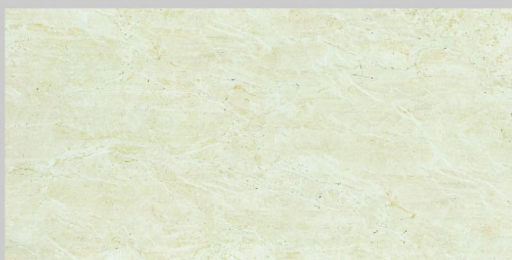
1-QGBY12605 (Glossy) Size: 600x1200mm
1-CGBY12605 (Matt)



1-QGBY12606 (Glossy) Size: 600x1200mm
1-CGBY12606 (Matt)



1-QGBY12608 (Glossy) Size: 600x1200mm
1-CGBY12608 (Matt)



1-QGBY12609 (Glossy) Size: 600x1200mm
1-CGBY12609 (Matt)



1-QGBY12612 (Glossy) Size: 600x1200mm
1-CGBY12612 (Matt)



1-QGBY12613 (Glossy) Size: 600x1200mm
1-CGBY12613 (Matt)

STONE COLOR LUXURY

Stone Elegance and Talent Series



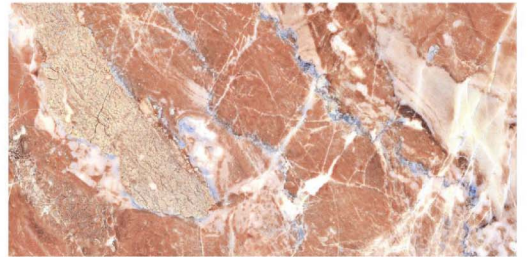
2-QGBY12616 (Glossy) Size: 600x1200mm
2-CGBY12616 (Matt)



1-QGBY12620 (Glossy) Size: 600x1200mm
1-CGBY12620 (Matt)



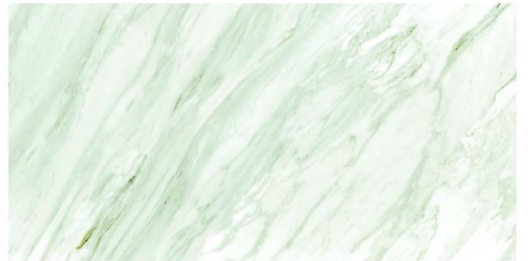
1-QGBY12622 (Glossy) Size: 600x1200mm
1-CGBY12622 (Matt)



2-CGBY12617 (Glossy) Size: 600x1200mm
2-CGBY12617 (Matt)



1-QGBY12624 (Glossy) Size: 600x1200mm
1-CGBY12624 (Matt)



1-QGBY12625 (Glossy) Size: 600x1200mm
1-CGBY12625 (Matt)



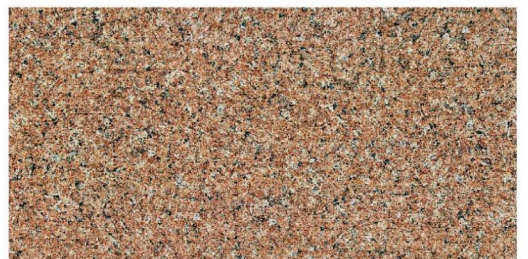
1-QGBY12627 (Glossy) Size: 600x1200mm
1-CGBY12627 (Matt)



1-QGBY12679 (Glossy) Size: 600x1200mm
1-CGBY12679 (Matt)



1-QGBY12678 (Glossy) Size: 600x1200mm
1-CGBY12678 (Matt)



1-QGBY12677 (Glossy) Size: 600x1200mm
1-CGBY12677 (Matt)



WOOD COLOR

Wood Grain Series



1-PGBY12651 (Glossy) Size: 600x1200mm



1-PGBY12652 (Glossy) Size: 600x1200mm



1-PGBY12653 (Glossy) Size: 600x1200mm



1-PGBY12654 (Glossy) Size: 600x1200mm



2-PGBY12675 (Glossy) Size: 600x1200mm



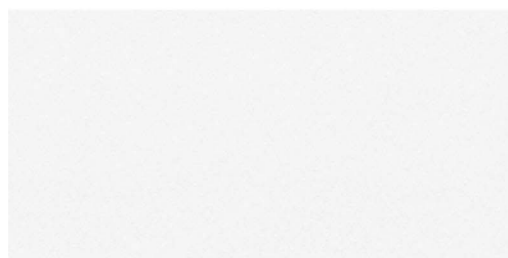
2-PGBY12676 (Glossy) Size: 600x1200mm





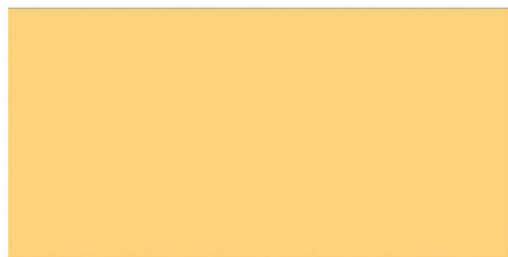
PURE COLOR

Pure Color Series



1-QGBY12600 (Glossy) Size: 600x1200mm
1-CGBY12600 (Matt)

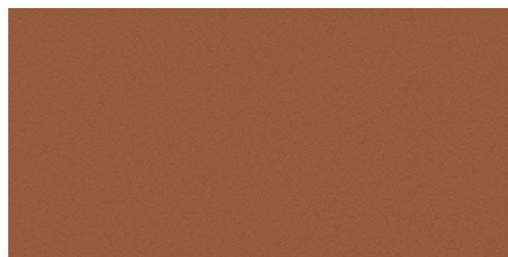
2-CGBY12660 (Glossy) Size: 600x1200mm
2-CGBY12660 (Matt)



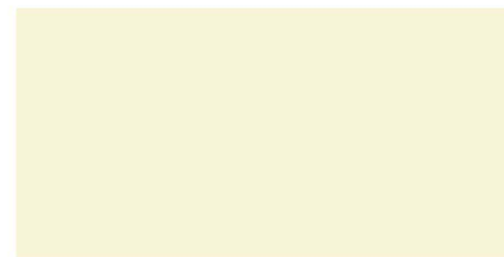
2-PGBY12684 Size: 600x1200mm



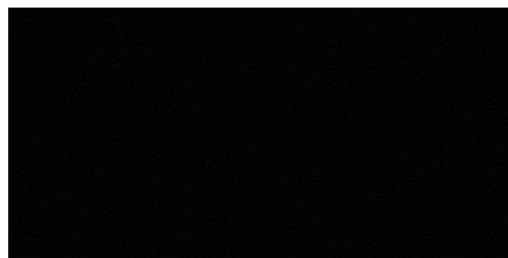
2-PGBY12685 Size: 600x1200mm



2-PGBY12686 Size: 600x1200mm



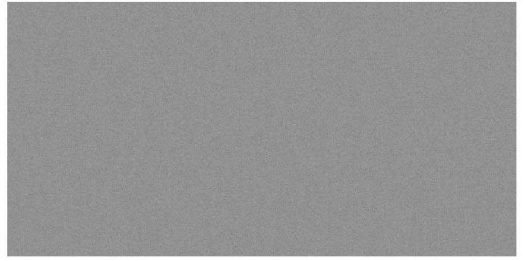
2-QGBY12664 (Glossy) Size: 600x1200mm
2-CGBY12664 (Matt)



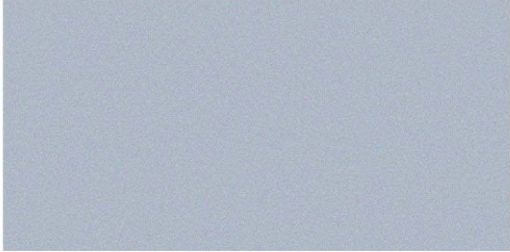
2-QGBY12663 (Glossy) Size: 600x1200mm
2-CGBY12663 (Matt)



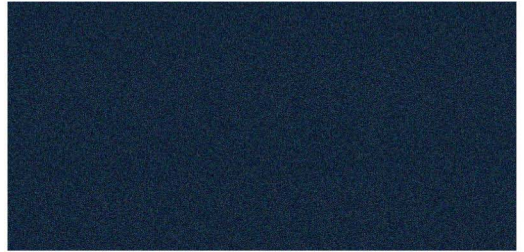
2-QGBY12661 (Glossy) Size: 600x1200mm
2-CGBY12661 (Matt)



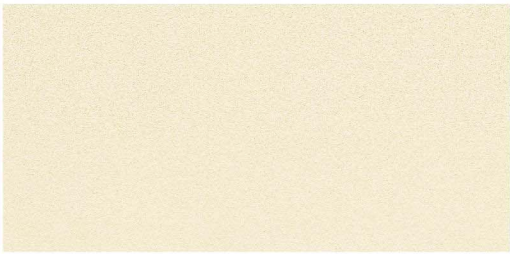
2-QGBY12662 (Glossy) Size: 600x1200mm
2-CGBY12662 (Matt)



1-PGBY12681 Size: 600x1200mm



1-PGBY12682 Size: 600x1200mm



1-PGBY12683 Size: 600x1200mm



1-PGBY12680 Size: 600x1200mm



EP Laminatic porcelain panel is available in the following scope:



Construction Outer Wall



Waiting Room



International Airport



Subway/Tunnel



Exhibition Center/Recreation and Sports Center



Mall



Office Building



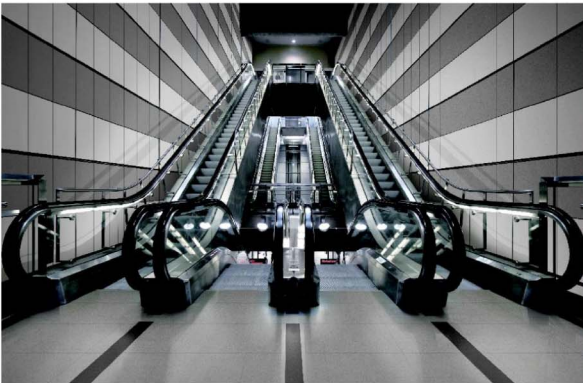
Home Furnishing/Decoration



Hotel



Movie Theater



New Zhongyuan Ceramics EP laminatic porcelain panel Construction System

Floor Installation Procedure:

Step One: You shall level the cement basic wall and the leveling shall be in 3mm;

Step Two: You shall stick the tapestry brick with adhesive;

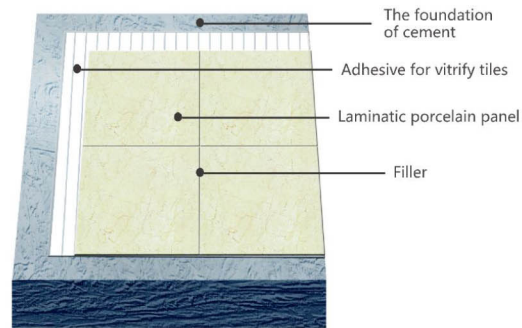
Step Three: You shall do the joint filling processing;

General Description of Construction:

1. The foundation of cement needs to be level and the errors between the vertical face verticality and surface smoothness both need to be $\leq 4\text{mm}$;

2. Sticking Construction: You shall stir it in accordance with configuration proportion between water and dry powder 1: 4 and make it stand for 15min, then do the second stirring, after that, you can use it. You shall operate with combined method and stick the sheet with binder to the appropriate place in line with the requirements. The sticking thickness is 5-8mm ;

3. Joint Filling Construction: You shall do the joint filling construction 24 hours later after the sticking and use the rubber joint filling spatula to press the joint mixture into the facing crevice in 45° angle. You shall stir it frequently to achieve the maximum operability. After the initial set and drying, you shall clean the tile face with soaked clean sponge.



Installation Procedure of Outer Wall:

Step One: You shall level the cement basic wall and the leveling shall be in 3mm;

Step Two: You shall stick the tapestry brick with adhesive;

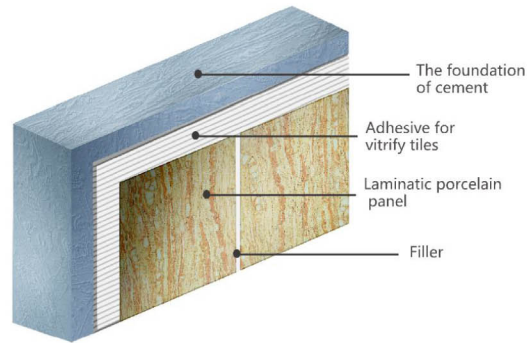
Step Three: You shall do the joint filling processing;

General Description of Construction:

1. The foundation of cement needs to be level and the errors between the vertical face verticality and surface smoothness both need to be $\leq 4\text{mm}$;

2. Sticking Construction: You shall stir it in accordance with configuration proportion between water and dry powder 1: 4 and make it stand for 15min, then do the second stirring, after that, you can use it. You shall operate with combined method and stick the sheet with binder to the appropriate place in line with the requirements. The sticking thickness is 5-8mm ;

3. Joint Filling Construction: You shall do the joint filling construction 24 hours later after the sticking and use the rubber joint filling spatula to press the joint mixture into the facing crevice in 45° angle. You shall stir it frequently to achieve the maximum operability. After the initial set and drying, you shall clean the tile face with soaked clean sponge.



Interior Wall Installation Procedure:

Step One: You shall do the base treatment leveling;

Step Two: You shall paint waterproof material;

Step Three: You shall use adhesive to stick the tapestry brick;

Step Four: You shall do the joint filling process;

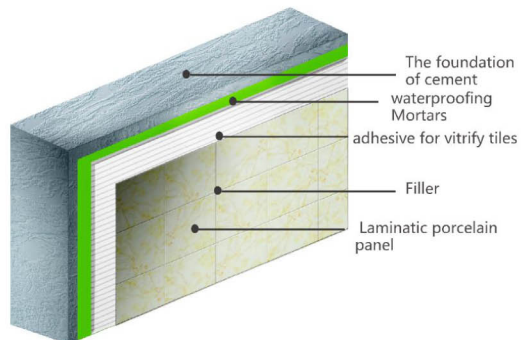
General Description of Construction:

1. The foundation of cement needs to be level and the errors between the vertical face verticality and surface smoothness both need to be $\leq 4\text{mm}$;

2. Waterproof Construction: You shall stir and paint it in accordance with the packing instruction. After the first drying of the surface (4-8 hours), you shall do the second painting (form the cross construction with the first construction) and the thickness of each time shall be about 0.5mm ;

3. Sticking Construction: You shall stir it in accordance with configuration proportion between water and dry powder 1: 4 and make it stand for 15min, then do the second stirring, after that, you can use it. You shall operate with combined method and stick the sheet with binder to the appropriate place in line with the requirements. The sticking thickness is 5-8mm ;

4. Joint Filling Construction: You shall do the joint filling construction 24 hours later after the sticking and use the rubber joint filling spatula to press the joint mixture into the facing crevice in 45° angle. You shall stir it frequently to achieve the maximum operability. After the initial set and drying, you shall clean the tile face with soaked clean sponge.



New Zhongyuan Ceramics EP laminatic porcelain panel Construction System

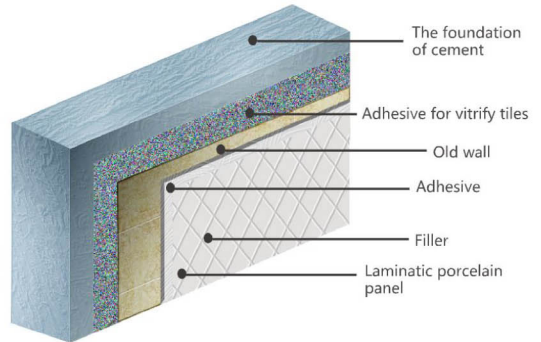
Old Tile Transformation Installation Procedure:

Step One: You shall check the bonding strength of old tile foundation and do the drawing test when it is necessary;

Step Two: You shall do the roughening treatment to the face of old tile and the roughening treatment area shall reach over 80%.

Step Three: You shall use ceramic tile adhesive to stick the tapestry brick;

Step Four: You shall do the joint filling process;



General Description of Construction:

1. The foundation of cement needs to be level and the errors between the vertical face verticality and surface smoothness both need to be $\leq 4\text{mm}$;

2. The surface roughening treatment area of old wall shall be over 80%.

3. Sticking Construction: You shall stir it in accordance with configuration proportion between water and dry powder 1: 4 and make it stand for 15min, then do the second stirring, after that, you can use it. You shall operate with combined method and stick the sheet with binder to the appropriate place in line with the requirements. The sticking thickness is 5-8mm ;

4. Joint Filling Construction: You shall do the joint filling construction 24 hours later after the sticking and use the rubber joint filling spatula to press the joint mixture into the facing crevice in 45° angle. You shall stir it frequently to achieve the maximum operability. After the initial set and drying, you shall clean the tile face with soaked clean sponge.

Floor Heating Procedure:

Step One: You shall do the base course leveling and clean the floor;

Step Two: You shall pave the thermal insulation material;

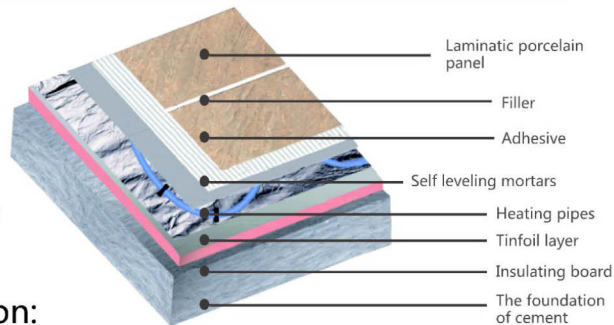
Step Three: You shall install the composite aluminous foil;

Step Four: You shall pave floor heating pipes;

Step Five: You shall level the cement layer;

Step Six: You shall stick the tapestry brick with ceramic tile adhesive;

Step Seven: You shall do the joint filling processing;



General Description of Construction:

1. The foundation of cement needs to be level and the errors between the vertical face verticality and surface smoothness both need to be $\leq 4\text{mm}$;

2. Floor Heating Installation: You shall pave reflectance coating on the foundation and lay down insulation board on it. After that, you shall install the floor heating, then level it with leveling mortar and the altitude difference after the leveling shall not be larger than 5mm;

3. Sticking Construction: You shall stir it in accordance with configuration proportion between water and dry powder 1: 4 and make it stand for 15min, then do the second stirring, after that, you can use it. You shall operate with combined method and stick the sheet with binder to the appropriate place in line with the requirements. The sticking thickness is 5-8mm ;

4. Joint Filling Construction: You shall do the joint filling construction 24 hours later after the sticking and use the rubber joint filling spatula to press the joint mixture into the facing crevice in 45° angle. You shall stir it frequently to achieve the maximum operability. After the initial set and drying, you shall clean the tile face with soaked clean sponge.

Wall Sticking Procedure:

Step One: EP laminatic porcelain panelx back sticking pendant pre- fastening;

Step Two: Base treatment;

Step Three: Snap the line to do the mesh division;

Step Four: Material preparation;

Step Five: EP laminatic porcelain panelx sticking face cleaning;

Step Six: Adhesives construction;

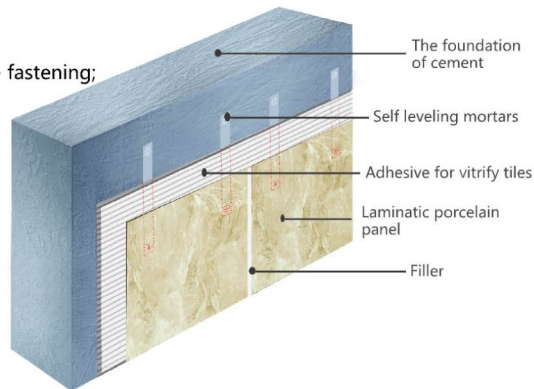
Step Seven: EP laminatic porcelain panelx back spreading;

Step Eight: EP laminatic porcelain panelx paving;

Step Nine: Evenness adjustment;

Step Ten: Fastening between fixing parts and wall;

Step Eleven: Surface clean and protection.



General Description of Construction:

1. The sticking number of each sheet shall not less than 3 and the interval shall be $\leq 750\text{mm}$.

2. When you do the adhesives construction, the included angle between trowel and base surface shall be about $45^\circ \sim 60^\circ$.

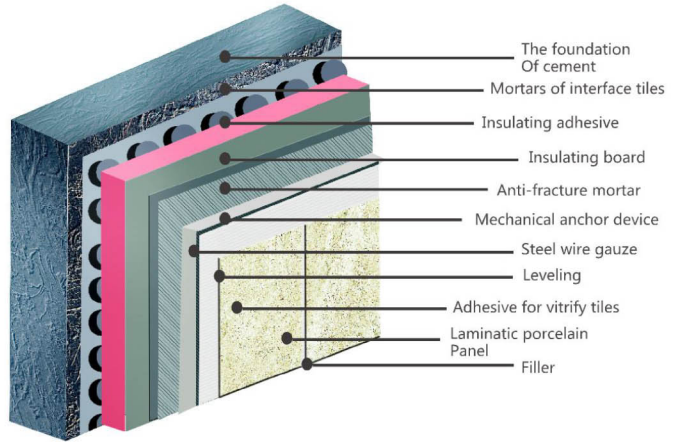
3. EP laminatic porcelain panelx sticking order shall be from bottom to top and the laminatic porcelain panelx in the base shall be set the firm lateral support.

4. You shall put the fastening piece into the base 100 ~ 200mm over the laminatic porcelain panelx.

New Zhongyuan Ceramics EP laminatic porcelain panel Construction System

External Thermal Insulation of External Wall Installation Procedure:

- Step One: You shall do the basic wall leveling;
- Step Two: You shall render the wall with adhesive; (Remarks: You shall strengthen the bonding strength between the insulating layer and wall.)
- Step Three: You shall install the insulating layer;
- Step Four: You shall do the anti-crack mortar construction;
- Step Five: You shall install the steel wire gauze;
- Step Six: You shall strengthen it with mechanical anchorage;
- Step Seven: You shall do the anti-crack mortar construction;
- Step Eight: You shall stick the tapestry brick with adhesive;
- Step Nine: You shall do the joint filling processing;

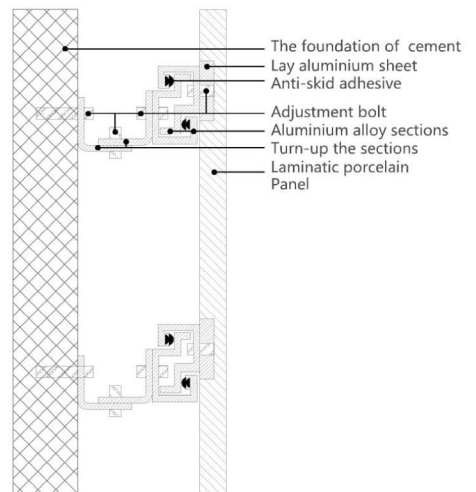


General Description of Construction:

1. The foundation of cement needs to be level and the errors between the vertical face verticality and surface smoothness both need to be $\leq 4\text{mm}$;
2. Insulation Board Sticking: You shall stick the installation board with specialized binder. Both sides of insulation board shall be used as interfaces;
3. Steel Wire Gauze Strengthening: You shall fasten the steel wire gauze on the insulation board and level it with specialized mortar;
4. Sticking Construction: You shall stir it in accordance with configuration proportion between water and dry powder 1: 4 and make it stand for 15min, then do the second stirring, after that, you can use it. You shall operate with combined method and stick the sheet with binder to the appropriate place in line with the requirements. The sticking thickness is 5-8mm ;
5. Joint Filling Construction: You shall do the joint filling construction 24 hours later after the sticking and use the rubber joint filling spatula to press the joint mixture into the facing crevice in 45° angle. You shall stir it frequently to achieve the maximum operability. After the initial set and drying, you shall clean the tile face with soaked clean sponge.

External Wall Dry-hang Construction Procedure:

- Step One: You shall do the external wall surface base treatment;
- Step Two: You shall do the wall surface mesh division paying-off;
- Step Three: You shall install and fasten the framework;
- Step Four: You shall check, adjust and accept the evenness and fastness of framework;
- Step Five: You shall make the dry-hang sample plate;
- Step Six: You shall do the large area dry-hang;
- Step Seven: You shall clean the laminatic porcelain panel surface;
- Step Eight: You shall fill in the sealing strips and sealant;
- Step Nine: You shall clean the decorative face;



General Description of Construction:

1. You shall clean the dirt on the sash, glass and metal decorative surface;
2. You shall seriously implement the rational construction procedure to prevent the damage and the dirt sticking on the surface;
3. You shall not collide the dry-hang surface when you dismantle the structure and load material;
4. You shall knock in the angle bead to protect the edge of the easily damaged parts after the external decoration surface.